



**Occupational Safety  
and Health Administration**



# **CSREM Alliance OSHA Safety and Health 2018**

**January 09, 2018**



*Peter Barletta  
Compliance Assistance Specialist*



# CAS Material Developed & Distributed

This information has been developed by an OSHA Compliance Assistance Specialist and is intended to assist employers, workers, and others as they strive to improve workplace health and safety. While we attempt to thoroughly address specific topics **[or hazards]**, it is not possible to include discussion of everything necessary to ensure a healthy and safe working environment in a presentation of this nature. Thus, this information must be understood as a tool for addressing workplace hazards, rather than an exhaustive statement of an employer's legal obligations, which are defined by statute, regulations, and standards. Likewise, to the extent that this information references practices or procedures that may enhance health or safety, but which are not required by a statute, regulation, or standard, it cannot, and does not, create additional legal obligations. Finally, over time, OSHA may modify rules and interpretations in light of new technology, information, or circumstances; to keep apprised of such developments, or to review information on a wide range of occupational safety and health topics, you can visit OSHA's website at [www.osha.gov](http://www.osha.gov).

# Electronically Submitting Injury, Illness Data



**December 31, 2017:**

Covered employers must electronically submit their 2016 **OSHA Form 300A** to OSHA. Based on establishment size 20 to 249 and NAICS codes high hazard, or 250 or more.

[1904.41 Electronically submitting injury, illness data](#)

- 2016 data: Submit by: December 31, 2017



# Electronically Submitting Injury, Illness Data



**July 1, 2018:**

Covered employers must electronically submit their 2017 OSHA Form 300A to OSHA. Based on establishment size 20 -249 with NAICS high hazard codes, or 250 or more.

## [1904.41 Electronically submitting injury, illness data](#)

- 2017 data: Submit by: July 1, 2018
- 2018 data and forward: Submit by: March 2, 2019...

<https://www.osha.gov/record-keeping/finalrule/index.html>

# OSHA Penalties

Below are the penalty amounts adjusted for inflation as of Jan. 2, 2018.

## Type of Violation

## Penalty

Serious

Other-Than-Serious

Posting Requirements

Failure to Abate

Willful or Repeated

\$12,934 per violation

\$12,934 per day beyond the  
abatement date

\$129,336 per violation

# Construction Enforcement Activities

	Reg 1	Reg 2	Reg 3	Reg 4	Reg 5	Reg 6	Reg 7	Reg 8	Reg 9	Reg 10	Nation
<b>FY17 Inspections</b>	<b>1,756</b>	<b>2,628</b>	<b>1,928</b>	<b>3,812</b>	<b>3,767</b>	<b>3,389</b>	<b>1,380</b>	<b>1,189</b>	<b>349</b>	<b>411</b>	<b>20,609</b>
<b>Construction Totals</b>	<b>910</b>	<b>1,445</b>	<b>877</b>	<b>1,905</b>	<b>1,778</b>	<b>1,832</b>	<b>570</b>	<b>652</b>	<b>108</b>	<b>111</b>	<b>10,188</b>
<b>% Construction</b>	<b>51.8%</b>	<b>55.0%</b>	<b>45.5%</b>	<b>50.0%</b>	<b>47.2%</b>	<b>54.1%</b>	<b>41.3%</b>	<b>54.8%</b>	<b>30.9%</b>	<b>27.0%</b>	<b>49.4%</b>
<b>FY16 Inspections</b>	<b>2,107</b>	<b>3,144</b>	<b>2,235</b>	<b>4,261</b>	<b>3,782</b>	<b>3,721</b>	<b>1,500</b>	<b>1,116</b>	<b>330</b>	<b>402</b>	<b>22,598</b>
<b>Construction Totals</b>	<b>1,124</b>	<b>1,691</b>	<b>1,014</b>	<b>2,052</b>	<b>1,543</b>	<b>1,953</b>	<b>575</b>	<b>593</b>	<b>141</b>	<b>128</b>	<b>10,814</b>
<b>% Construction</b>	<b>53.3%</b>	<b>53.8%</b>	<b>45.4%</b>	<b>48.2%</b>	<b>40.8%</b>	<b>52.5%</b>	<b>38.3%</b>	<b>53.1%</b>	<b>42.7%</b>	<b>31.8%</b>	<b>47.9%</b>

Source: OIS PVA week #36

# National Emphasis Programs

- Trenching and Excavation
- Combustible Dust
- Hazardous Machinery (amputations)
- Hexavalent Chromium
- Isocyanates
- Lead
- Nursing and Residential Care Facilities
- Primary Metals
- Process Safety Management
- Shipbreaking
- Silica \* **(temporarily removed)**





# Local Emphasis Programs

- Noise in the Workplace
- Fall Hazards
- Mast Climbing Work Platforms (**Removed**)
- Crane Operation in Construction
- Powered Industrial Trucks
- Residential Construction
- Crystalline Silica Exposure \*
- Scrap, Waste and Refuse Industries



# CONSTRUCTION INDUSTRY

## Top Ten Most Frequently Cited Construction Violations FY 2016

1. Duty to have fall protection
2. Scaffolding
3. Ladders
4. Fall protection training
5. Eye and face protection
6. General safety/health provisions: 1926.20(b)
7. Head protection
8. Aerial lifts
9. Fall protection systems criteria and practices
10. Excavations

*as of Sept. 30, 2016*

## NAICS Code: 23 Construction – Top 10 Citations FY 2017

Listed below are the standards which were cited by **Federal OSHA** for the specified NAICS Code during the period October 2016 through September 2017. Penalties shown reflect current rather than initial amounts.

Standard	Citations	Inspections	Penalty	Description
<a href="#">Total</a>	28,650	11,669	\$85,161,645	<i>All Standards cited for Construction</i>
<a href="#">19260501</a>	6,796	6,583	\$32,063,433	Duty to have fall protection.
<a href="#">19260451</a>	3,409	1,623	\$9,364,920	General requirements. Scaffolds
<a href="#">19261053</a>	2,527	2,081	\$5,769,176	Ladders.
<a href="#">19260503</a>	1,749	1,694	\$2,531,255	Training requirements.
<a href="#">19260102</a>	1,403	1,398	\$3,185,520	Eye and face protection.
<a href="#">19101200</a>	938	500	\$800,720	Hazard Communication.
<a href="#">19260100</a>	880	880	\$1,962,832	Head protection.
<a href="#">19260020</a>	777	712	\$1,865,837	General safety and health 20(b)(2) provisions.
<a href="#">19260453</a>	772	696	\$2,166,891	Aerial lifts.
<a href="#">19260502</a>	718	498	\$1,600,876	Fall protection systems criteria and practices.

# Total Workplace Fatalities 2016

- A total of 5,190 workers died from on-the-job injuries in 2016 – a 7 percent increase from 2015 and the highest number of fatalities since 5,214 workers died in 2008.
- The rate of fatal workplace injuries climbed to 3.6 per 100,000 full-time equivalent workers in 2016 from 3.4 per 100,000 FTE in 2015.

Note: according to [data](#) released Dec. 19 by the Bureau of Labor Statistics.



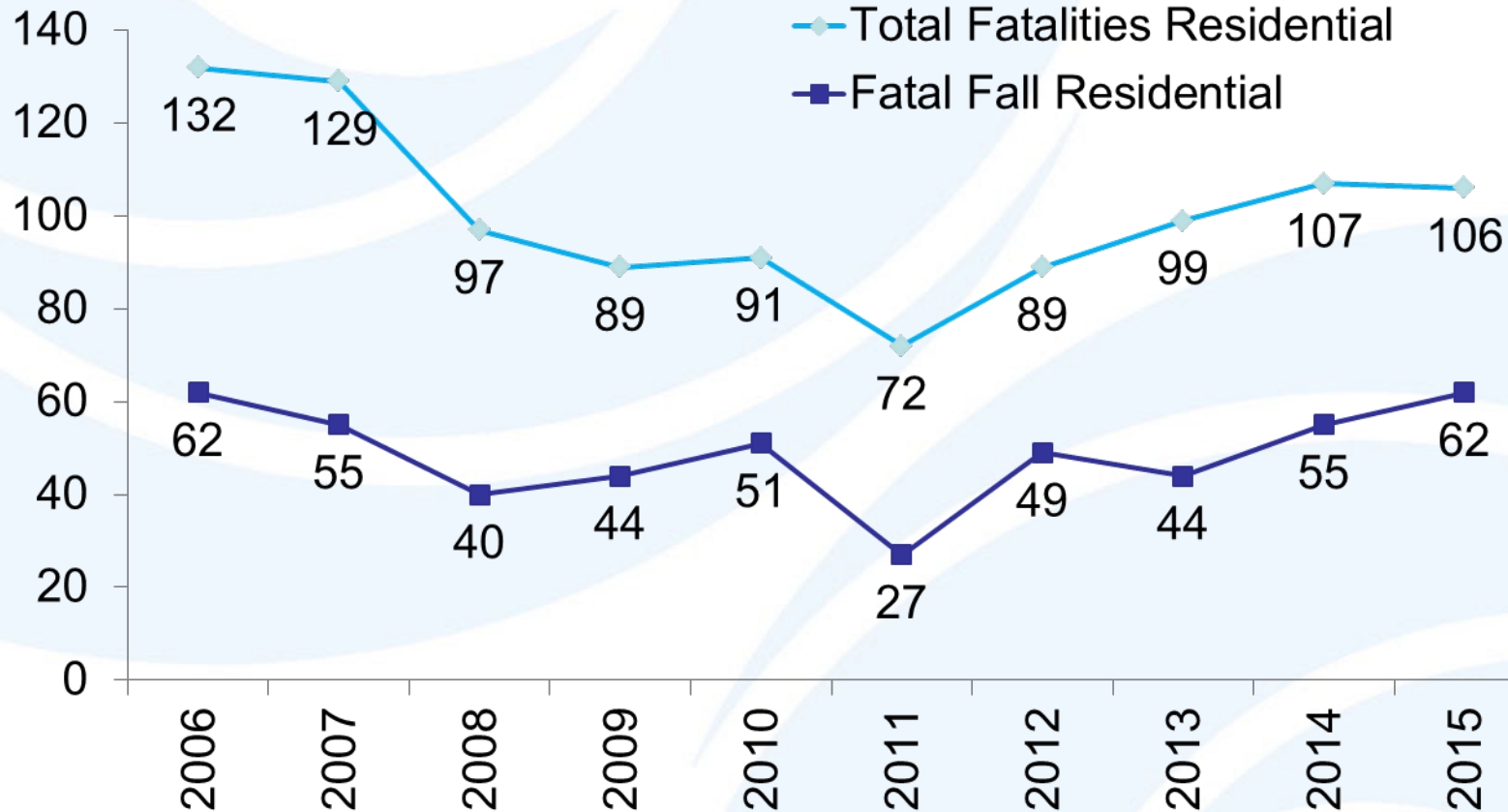
## Fatal Accidents Construction rose 5% in 2016

- The latest annual BLS [report](#) on fatal occupational injuries and incidents, released on Dec. 19, shows that private-sector construction deaths increased in year 2016 to 991 from 937 in year 2015.
- The 2016 total was the largest number of fatalities in recent years and exceeded the 2008 level of 975.
- Construction's fatality rate in 2016 was 10.1 per 100,000 full-time-equivalent workers, the same as in 2015
- 388 fall fatalities in 2016 = 36% of the industry's total jobsite deaths. The number of fall-related deaths is up from 367 in 2015.

# Construction Industry Fatalities

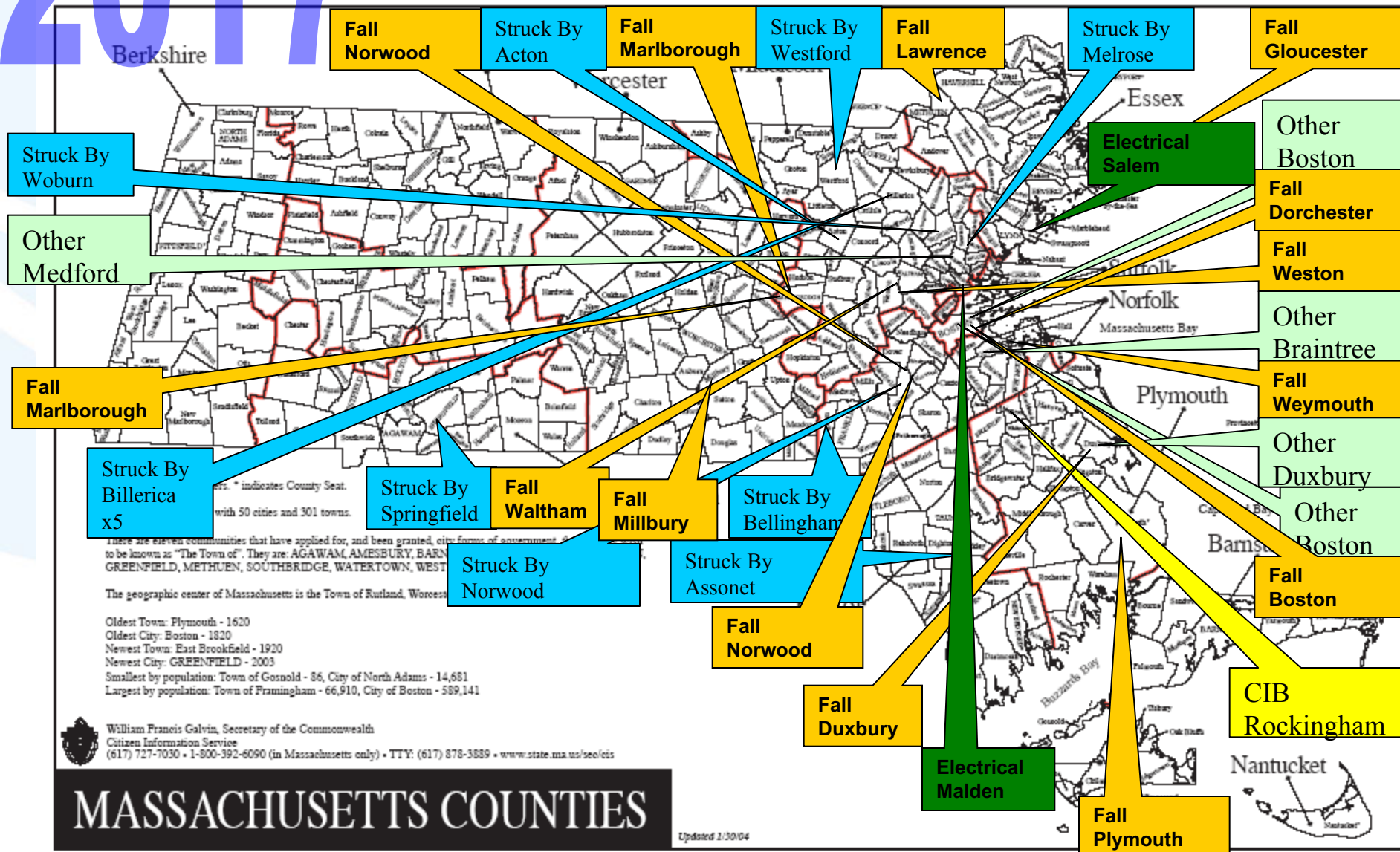
Years	2010	2011	2012	2013	2014	2015
Total Fatalities All Construction	774	738	806	828	899	937
Fatality Rates All Construction	9.8	9.1	9.9	9.7	9.8	10.1

# Fatal Falls in Residential Construction 2006 - 2015



Source of fatality data: Bureau of Labor Statistics

# 2017



10/1/16-9/7/2017

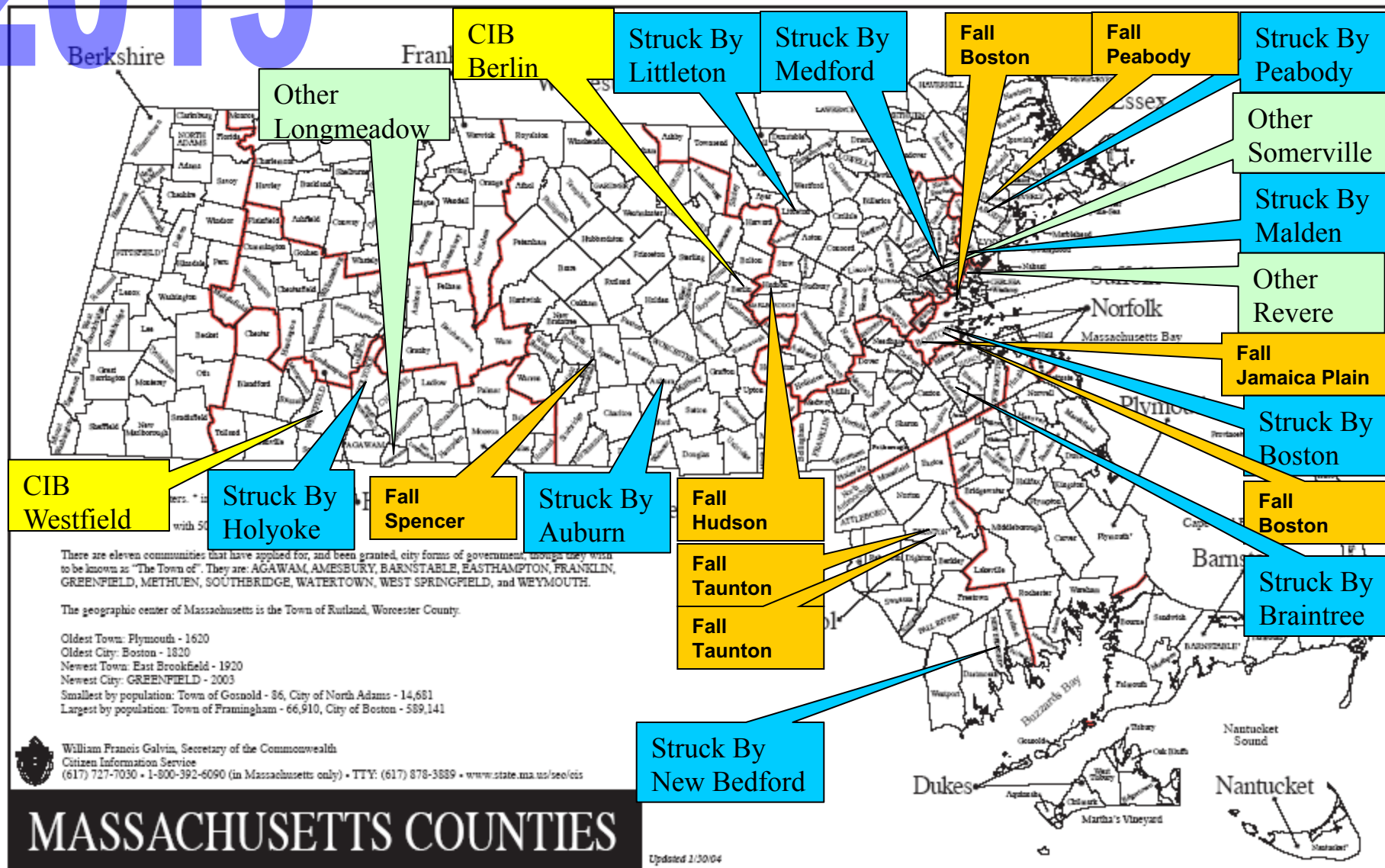


**MASSACHUSETTS COUNTIES**

Updated 1/30/04

10/1/15-9/30/2016

# 2015



10/1/14-9/30/2015

# Leading Causes of Construction Accidents- Focus Four

- **Falls** from elevations
- **Electrical** Shock
- **Struck by** machinery or materials
- **Crushing injuries**, trench collapse, overturned vehicles, etc.



# Massachusetts 3 Years – 2017, 2016, and 2015

## Focus Four Fatalities

**Falls – 26**

**Electrical – 2**

**Struck-By – 25**

**Crushed or Caught in-Between- 18**

Total 71 Federal OSHA Fatality Investigation

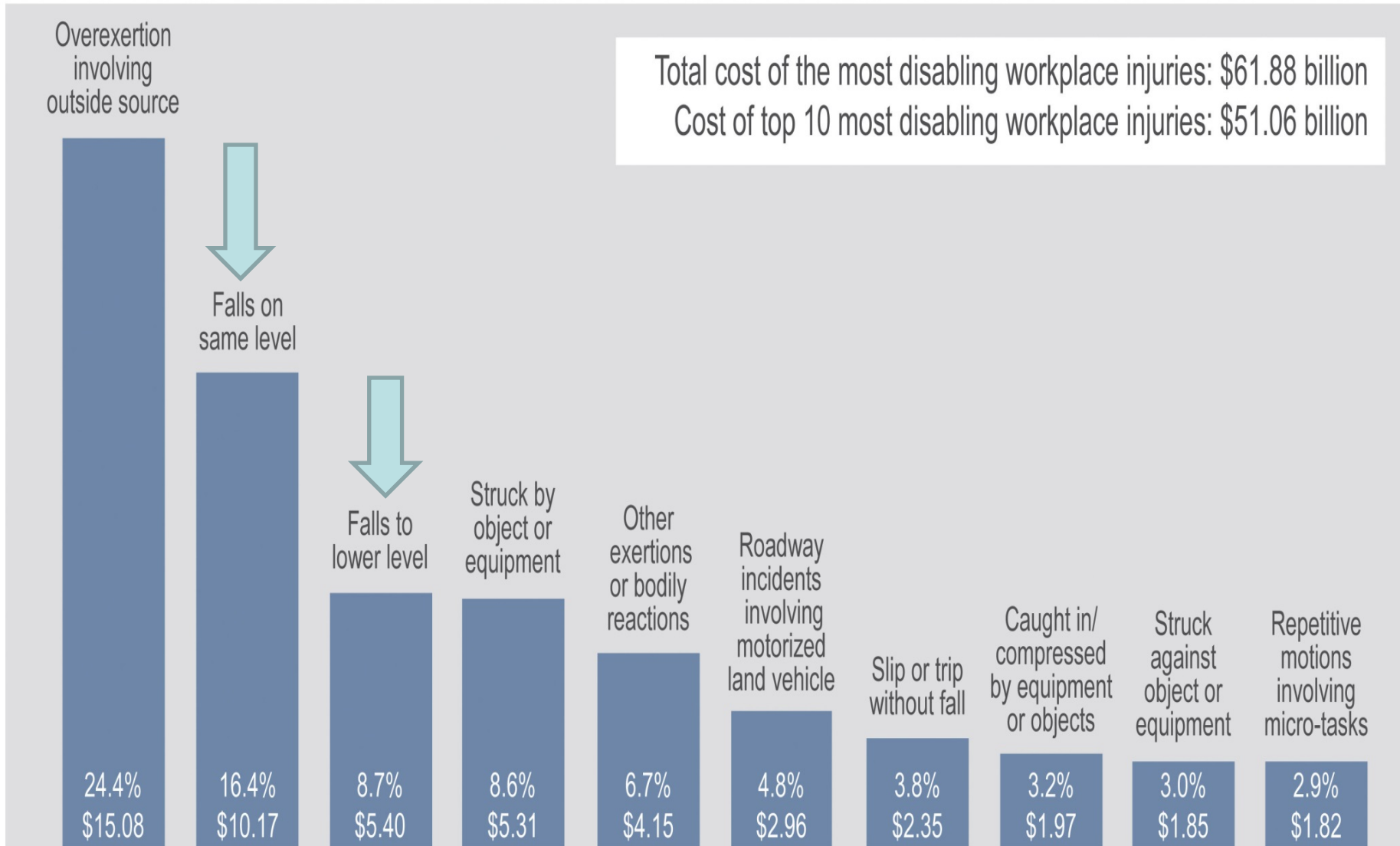




# Top 10 Causes and Direct Costs of the Most Disabling U.S. Workplace Injuries

Total cost of the most disabling workplace injuries: \$61.88 billion  
Cost of top 10 most disabling workplace injuries: \$51.06 billion

\$ Billions



2016 Liberty Mutual Workplace Safety Index (based on 2013 injury data)

# The Most Serious Workplace Injuries Cost U.S. Companies \$59.9 Billion Per Year, According to 2017 Liberty Mutual Workplace Safety Index

The top three causes – which collectively represent almost half of the cost of the leading accidents:

- ❑ *overexertion* (\$13.8 billion, 23 percent),
- ❑ *falls on same level* (\$10.6 billion, 17.7 percent)
- ❑ *and falls to lower level* (\$5.5 billion, 9.2 percent)



Statistics from BOSTON--([BUSINESS WIRE](#))--



# Winter Weather Preparedness

- Cold Stress (Frostbite, Hypothermia)
- Preventing Slips on Snow and Ice
- Shoveling Snow
- Clearing Snow from Heights
- Using Powered Equipment
- Winter Driving
- Downed Trees and Power Lines
- Stranded in a Vehicle



[https://www.osha.gov/dts/weather/winter\\_weather/index.html](https://www.osha.gov/dts/weather/winter_weather/index.html)









02.19.2015 10:41



# OSHA Annual Summary, 300A

**Basic requirement. At the end of each calendar year, you must:**

- Review the OSHA 300 Log to verify that the entries are complete and accurate, and correct any deficiencies identified;
- Create an annual summary of injuries and illnesses recorded on the OSHA 300 Log;
- Certify the summary; and
- Post the annual summary for each establishments in a conspicuous place from February 1, 2017 to April 30, 2018

# National Ladder Safety Month



March 2018:

- Training
- Usage
- Inspect and properly dispose of old, damaged or obsolete ladders



<http://www.americanladderinstitute.org/page/laddersafetymonth>



**OSHA**® Occupational Safety and Health Administration

# NATIONAL WORK ZONE AWARENESS WEEK



April 9 to 13, 2018:

National Work Zone Awareness Week (NWZAW) is an annual spring campaign held at the start of construction season to encourage safe driving through highway work zones. The key message is for drivers to use extra caution in work zones. Also, learn about [Go Orange Day](http://www.atssa.com/events/nationalworkzoneawarenessweek.aspx).

<http://www.atssa.com/events/nationalworkzoneawarenessweek.aspx>



# Workers' Memorial Day



April 28, 2018:

- Workers' Memorial Day, International Workers' Memorial Day or International Commemoration Day (ICD) for Dead and Injured or Day of Mourning is an annual day of remembrance and action for workers killed, disabled, injured or made ill.
- An opportunity to highlight the preventable nature of most workplace incidents and ill health
- Promote the need fight for improvements in work safety.
- Remember the dead – Fight for the living.

**Also OSHA's Birthday!**



# NATIONAL SMALL BUSINESS WEEK

April 29 - May 5, 2018 | Save the date!

April 29 to May 5 2018:

- Proclaimed National Small Business week by the President.
- Recognizes the critical contributions of America's entrepreneurs and small business owners.
- More than half of Americans either own or work for a small business, and they create about two out of every three new jobs in the U.S. each year.
- The SBA highlights the impact of outstanding entrepreneurs, small business owners, and others from all 50 states and U.S. territories.
- Create 21st century jobs, drive innovation, and increase America's global competitiveness.





# National Safety **Stand-Down**

To Prevent Falls in Construction

**MAY 7-11, 2018**

- A Safety Stand-Down is a voluntary event for employers to talk directly to employees about safety. Any workplace can hold a stand-down by taking a break to focus on "Fall Hazards" and reinforcing the importance of "Fall Prevention". It's an opportunity for employers to have a conversation with employees about hazards, protective methods, and the company's safety policies and goals. It can also be an opportunity for employees to talk to management about fall hazards they see.
- Certificate of Participation, Share  
<https://www.osha.gov/StopFallsStandDown/index.html>



Nearly

# FALLS

account

3%

of deaths  
in construction

BLS data

Construction  
worker

3  
FATA

in

BLS

Employees

# Deadliest injury in construction: falls

[OSHA.gov/stopfalls](https://www.osha.gov/stopfalls)

BLS data 2015

# Construction, Safety Week 2018



May 7-11, 2018:

The Mission of Safety Week is to collectively raise the awareness of the construction industry's continuing commitment to eliminating worker injury, and to clearly communicate its dedication to a shared culture of care and concern and the belief that every week must be Safety Week.



<http://www.constructionsafetyweek.com/events/plan-your-safety-week-activities/>



# Heat Illness Prevention Campaign

## May 25, 2018



### To prevent heat related illness and fatalities:

- Acclimate to the heat; most heat related fatalities occur on the first 3 days of exposure.
- Drink water every 15 minutes, even if you are not thirsty.
- Rest in the shade to cool down.
- Wear a hat and light-colored clothing.
- Learn the signs of heat illness and what to do in an emergency.
- Keep an eye on fellow workers.



<http://www.osha.gov/heat>

**WATER. REST. SHADE.**

OSHA's Campaign to Keep Workers Safe in the Heat



# June is National Safety Month



National Safety Month focuses on reducing leading causes of injury and death at work, on the road and in our homes and communities.

- Week 1: Stand Up to Falls
- Week 2: Recharge to Be In Charge (Focusing on Fatigue)
- Week 3: Prepare for Active Shooters
- Week 4: Don't Just Sit There (Focusing on Ergonomics)
- Road Safety for Workers

<http://www.nsc.org/act/events/Pages/national-safety-month.aspx?var=hpnsn>





# National Forklift Safety Day



**June 12, 2018:**

Areas of concern:

- Training and Evaluation
- Maintenance
- Operation
- Handling Hazardous Material



<http://www.indtrk.org/national-forklift-safety-day/forklift-safety-day-2017>



# Trench Safety Stand Down

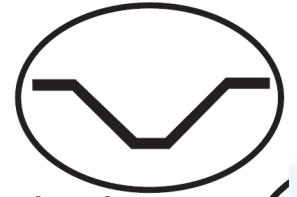


**June 18-23, 2018:**

Focus on:

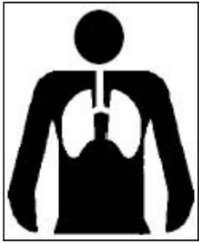
- Education, what are trenching & excavation hazards
- Reinforce the importance of using trench protective systems
- And protecting workers from trenching hazards.

Receive Recognition for Participating in the event.



<http://www.nuca.com/tssd>





# Silica



**June 23, 2018:** Silica General Industry and Maritime Standards Compliance Date.

- ❖ Complete an inventory of silica operations
- ❖ Perform an assessment of each
- ❖ Establish controls (engineering and work procedures)
- ❖ Provide PPE
- ❖ Housekeeping
- ❖ Create a written exposure control plan
- ❖ Communicate/Train the workers, include the work plan
- ❖ Medical surveillance
- ❖ Recordkeeping
- ❖ Review

<https://www.osha.gov/dsg/topics/silicacrystalline/>



# Safe + Sound Week



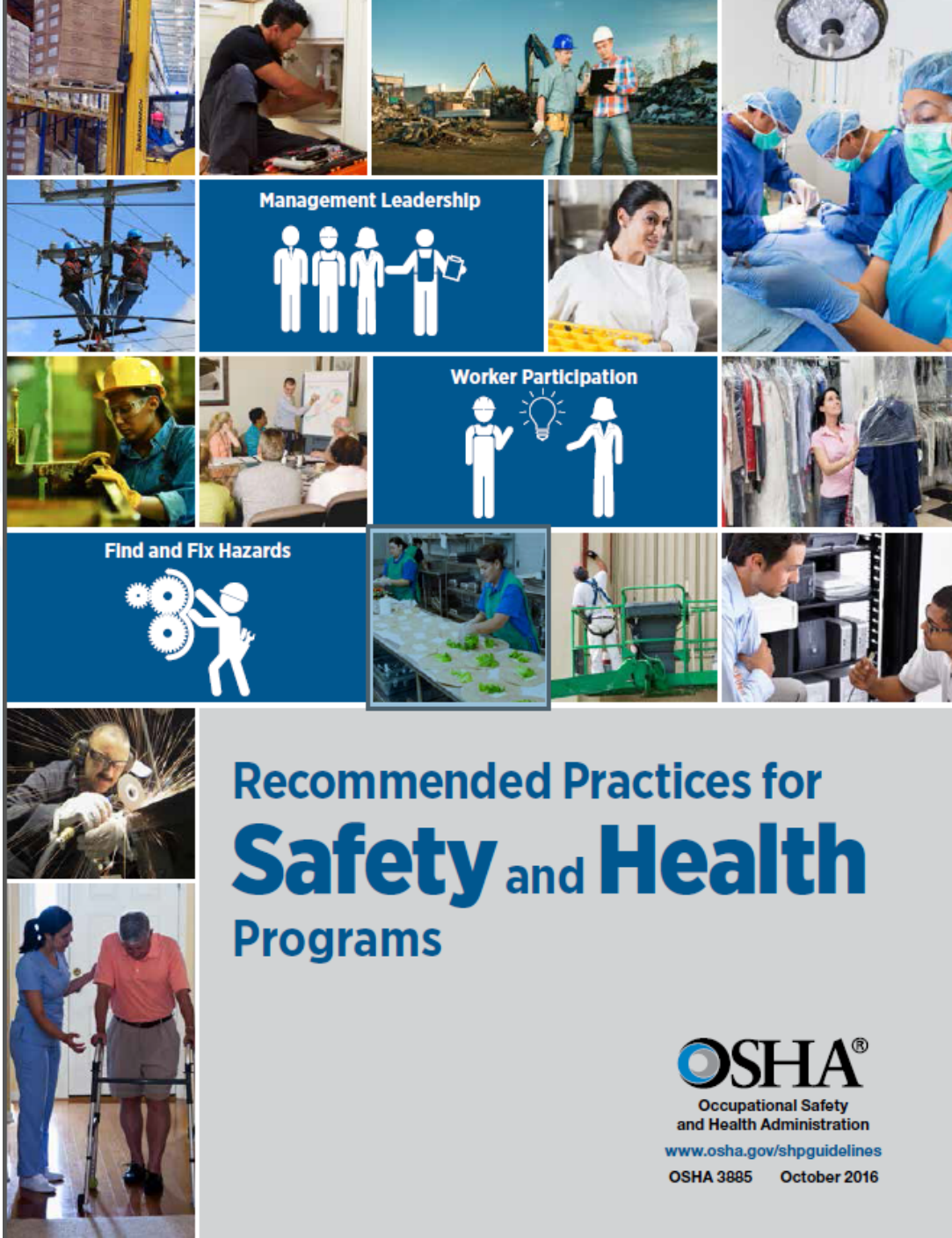
August 13-19, 2018

A nationwide event to raise awareness and understanding of the value of safety and health programs that include:

- Management leadership,
- Worker participation,
- Systematic approach to finding and fixing hazards in workplaces.

<https://www.osha.gov/safeandsoundweek/>





- Management Leadership
- Worker Participation
- Hazard Identification and Assessment
- Hazard Prevention and Control
- Education and Training
- Program Evaluation and Improvement
- Communication and Coordination for Host Employers, Contractors

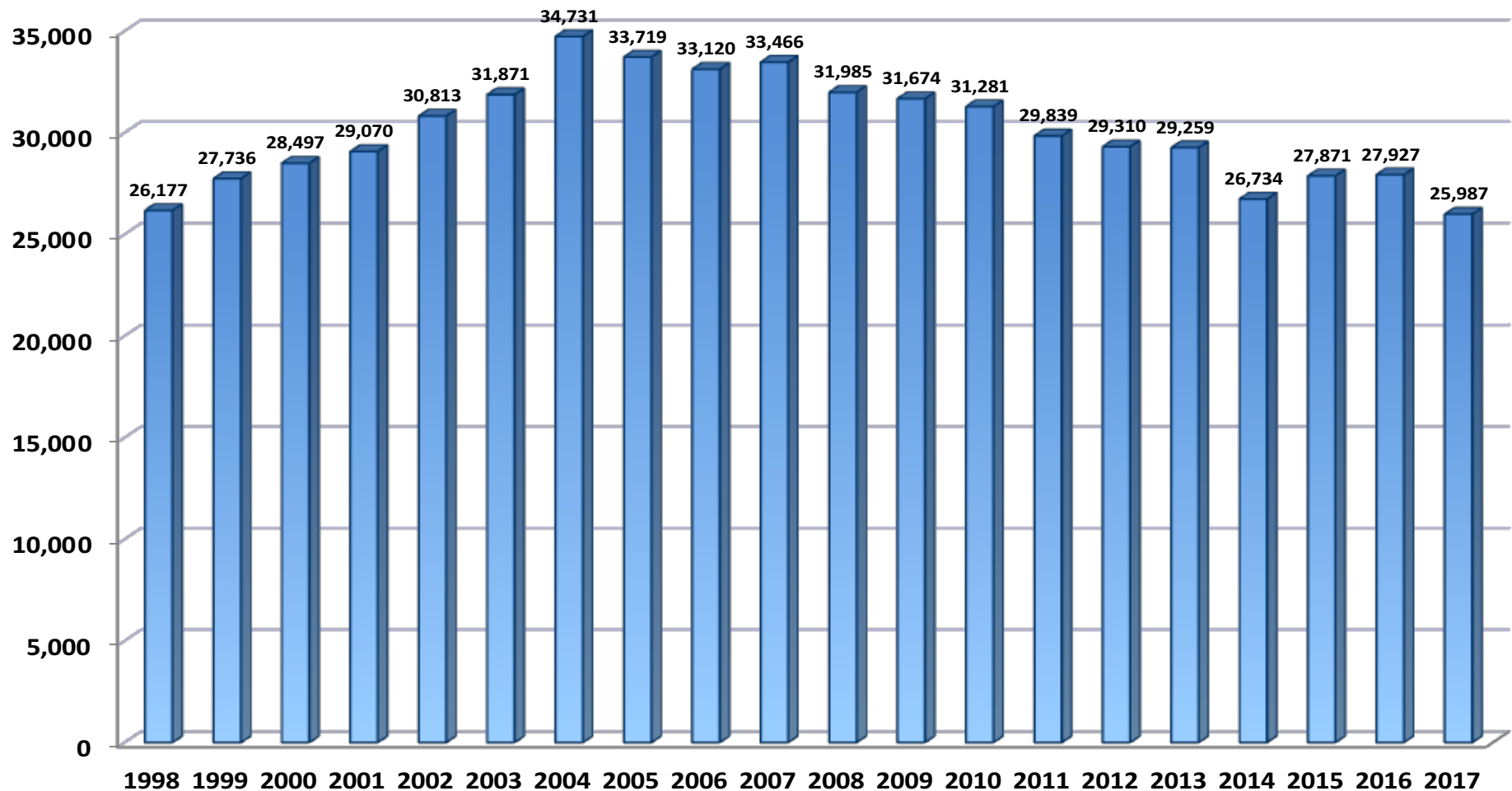




# **OSHA Consultation Service** **Massachusetts**

- Aimed to help employers who want help in recognizing and correcting safety and health hazards and in improving their safety and health programs.
- Free, largely funded by OSHA
- Requirement: A commitment to correcting serious safety and health hazards
- Confidential, tailored to small business

# On-Site Consultation Visits: FYs 1998 - 2017



- Sources: FY 2017 On-Site Consultation Report (OIS) generated on November 13, 2017.
- Parameters: Private Sector, Opening Conference Date: October 1, 2016 – September 30, 2017.
- Totals include 21(d) and 23(g) On-Site Consultation Project data.



# On-site Consultation

Free



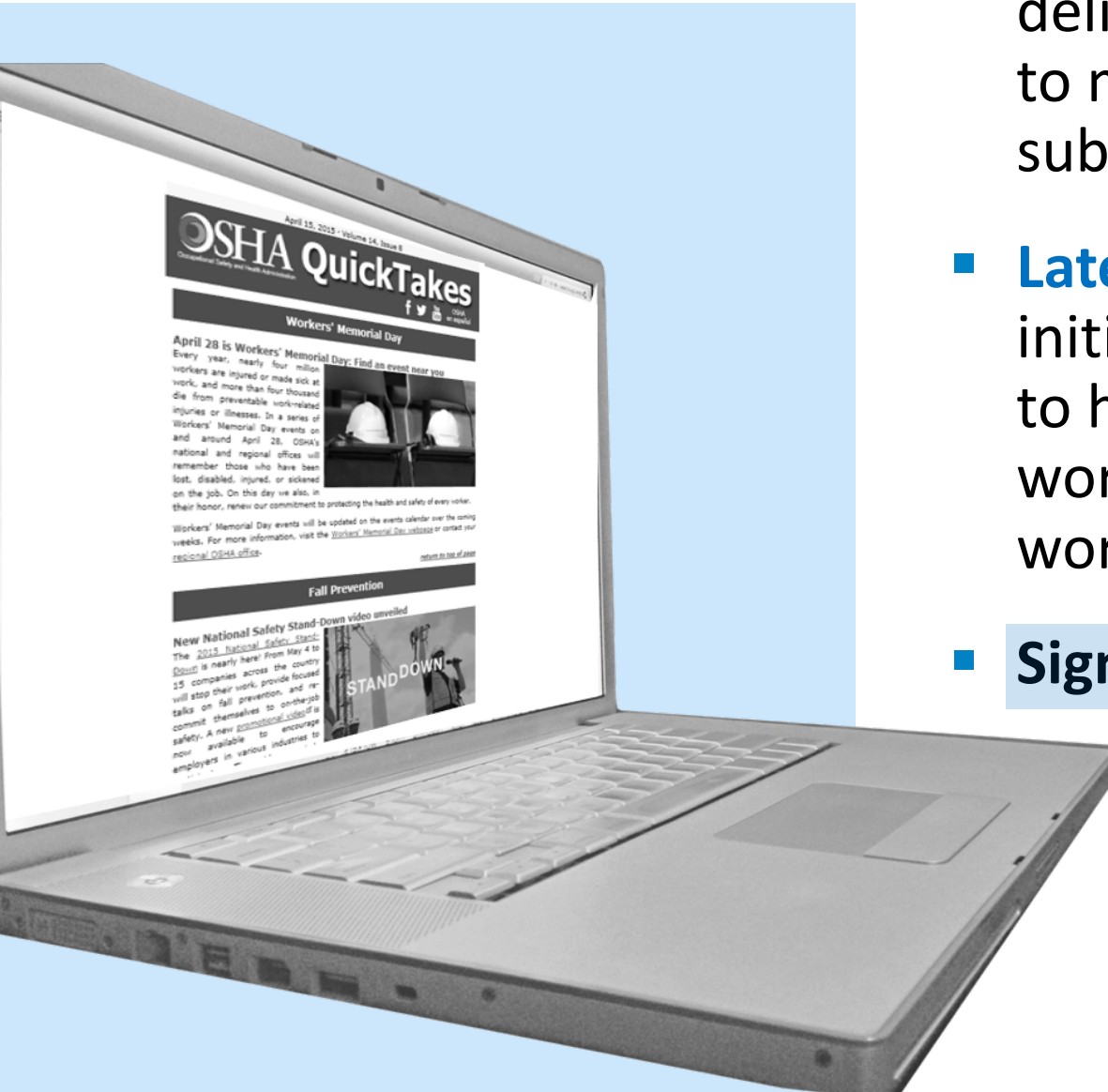
MA Department of Labor  
OSHA Consultation Program  
Wall Experiment Station  
37 Shattuck Street  
Lawrence, MA 01843

phone: 617-626-6504

fax: 978-687-0013

email: [Masscon@state.ma.us](mailto:Masscon@state.ma.us)

# OSHA QuickTakes



- **Free** OSHA e-newsletter delivered twice monthly to more than 110,000 subscribers
- **Latest news** about OSHA initiatives and products to help employers and workers find and prevent workplace hazards
- Sign up at **[www.osha.gov](http://www.osha.gov)**

## Silica in Construction: Fact Sheets on Table 1 Tasks



OSHA has issued a series of [new and revised fact sheets](#) to help employers comply with OSHA's respirable crystalline silica standard for construction. The fact sheets review dust controls that can be used for equipment and tasks listed in Table 1 of the construction standard



# Updated Training Web Pages

OSHA's redesigned [training web pages](#) provide information on training requirements and resources, outreach training (10- and 30-hour cards), OSHA Education Centers, and Susan Harwood Training Grants.

**Region I**  
**Keene State College OSHA Education Center**

*1050 Perimter Road, Entrance #2*

*Manchester, NH 03103-3308*

*(800) 449-6742*

<http://www.oshaedne.com/>



## Occupational Safety &amp; Health Administration

## We Can Help

What's New | Offices

Home

Workers

Regulations

Enforcement

Data &amp; Statistics

Training

Publications

Newsroom

Small Business



## Highlights



Workers receive hands-on training in the recognition, avoidance, and prevention of construction safety hazards on the jobsite.

# OSHA Training

## Courses, Materials, and Resources

OSHA offers a wide selection of training courses and educational programs to help broaden worker and employer knowledge on the recognition, avoidance, and prevention of safety and health hazards in their workplaces. OSHA also offers training and educational materials that help businesses train their workers and comply with the Occupational Safety and Health Act.

This page references training courses, educational programs, and training materials and resources that are administered by the OSHA Directorate of Training and Education.

## In Focus

- OSHA announces new Outreach Training Program Requirements [PDF\*]
- US Department of Labor's OSHA announces selection of OSHA Training Institute Education Centers
- New searchable schedule for OTI Education Center courses

## Quick Links

- Introduction to OSHA Materials
- OSHA Training Requirements
- How to Find Outreach Training
- How to Obtain Replacement Outreach Training Program Cards
- HAZWOPER FAQs

## Worker Training

Through the Outreach Training Program and the OTI Education Center Program, OSHA offers a broad selection of occupational safety and health classes designed for workers and employers.

- 10-Hour & 30-Hour Worker Classes
- Multi-day Training Classes by Topic
- Short Courses and Seminars

## Grants

Under the Susan Harwood Training Grant Program, OSHA awards grants to nonprofit organizations to develop training and educational programs and/or deliver training and education to workers and employers.

- Susan Harwood Training Grants
- Applying for a Grant
- Grant Requirements
- Award Announcements

## OSHA Training Institute

OTI is an internal training unit which provides occupational health and safety compliance training for federal and state compliance officers and other federal agency personnel. A limited number of private sector workers and employers may register for OTI courses on a tuition basis as space is available.

- OSHA Training Institute (OTI)
- How to Register for OTI Courses

## Training Materials and Resources Gateway

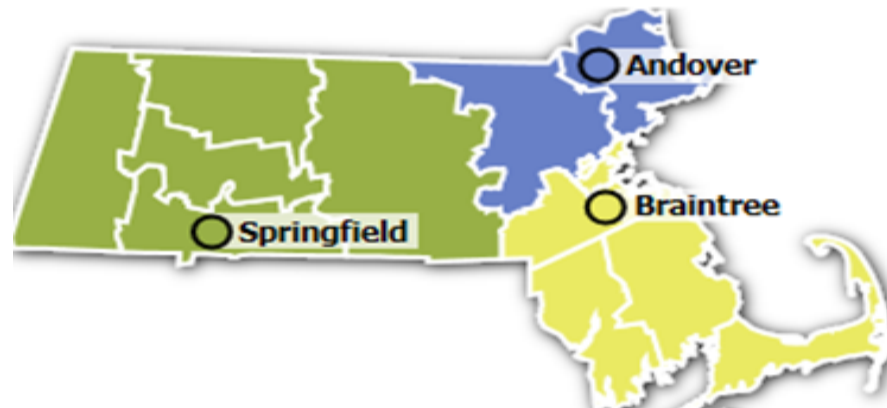
Access training materials designed to help workers and employers recognize safety and health hazards in the workplace.

- Safety and Health Training Resources
- OSHA Compliance Guidance on Training
- Training FAQs

## Program Information

- Susan Harwood Training Grants
- OSHA Outreach Training Program
- OSHA Training Institute (OTI)
- OTI Education Centers
- Resource Center Loan Program
- Directorate of Training and Education (DTE)





## MASSACHUSETTS

Contact the office nearest you.

### OSHA Area Offices

These federal OSHA offices cover private sector employers and workers in Massachusetts:

● **North Boston Area Office**

Shattuck Office Center  
138 River Road, Suite 102  
Andover, MA 01810  
(978)837-4460  
(978)837-4455 FAX

● **South Boston Area Office**

639 Granite Street, 4th Floor  
Braintree, MA 02184  
(617)565-6924  
(617)565-6923 FAX

● **Springfield Area Office**

1441 Main Street, Room 550  
Springfield, MA 01103-1493  
(413)785-0123  
(413)785-0136 FAX

### On-Site Consultation Program ⓘ

[Massachusetts On-site Consultation Program](#) ↗



